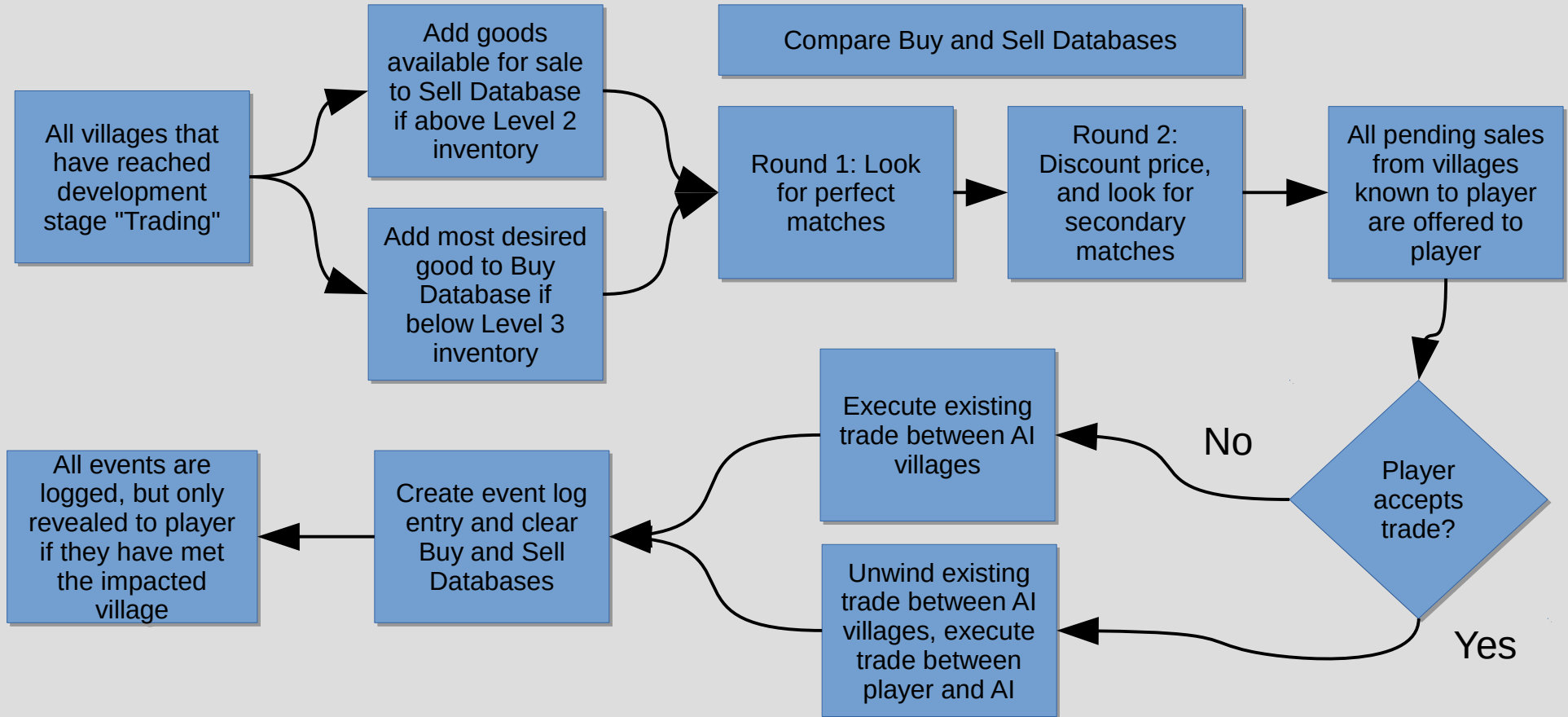


RF 87 Global Map: AI Trade Cycle



Definitions

Perfect Match: A buyer cannot effectively produce seller's good AND has less than Level 3 inventory of the good

Secondary Match: A buyer does not produce seller's good for trade AND has less than Level 3 inventory of the good

Inventory Levels: All good are evaluated based on four inventory thresholds, from lowest (1) to highest (4). These effect trade, production, and consumption